



**ColorGATE**

INNOVATIVE SOLUTIONS  
COMMITTED TO COLOR

# **COLORGATE PRINTING SOFTWARE**

## **RELEASE NOTES V23 BUILD 15040**

**May 8th, 2023**

Precision meets  
Automation



## Contents

1	Introduction .....	3
2	New Drivers .....	5
2.1	Printer Drivers .....	5
2.2	Cutting Device Drivers .....	7
2.3	Measurement Device Drivers.....	7
3	Improvements and Bugfixes.....	8
3.1	<b>NEW</b> Combination of Fingerprint and Color Correction Loop Module .....	8
3.2	<b>NEW FEATURE</b> Creation of Web Tickets in the Software .....	9
3.3	<b>NEW FEATURE</b> Switching between Online and Offline Mode in the Software.....	10
3.4	General Improvements and Bugfixes .....	11
3.5	Adobe® PDF Print Engine .....	17
3.6	Color Correction Loop Module .....	17
3.7	Container .....	18
3.8	Cost Calculation Module.....	18
3.9	Fingerprint Module .....	18
3.10	G7 Calibration Module .....	19
3.11	JDF Interface Module .....	19
3.12	Job Backup Module.....	19
3.13	Media and Light Profiler Module .....	20
3.14	Media Device Synchronization .....	20
3.15	Out of Gamut Module.....	21
3.16	Print and Cut Module .....	21
3.17	Profiler Module / Linearization Assistant .....	23
3.18	REST API Module.....	25
3.19	Printer related.....	27

# 1 Introduction

This document describes the changes and improvements since Productionserver 22.10 Build 14029. The upgrade to version 23 contains new features, significant improvements, and enhancements of existing modules and features, as well as bugfixes.

In addition to applications for Commercial Printing, this document also includes some innovations for Industrial Productionserver products.

For each modification it is stated if it is a new feature, an improvement of an existing module/feature, or a bugfix:

**NEW FEATURE:** a completely new feature

**NEW:** an innovation/improvement of an already existing feature

**CHANGE:** a change of an already existing feature

**BUGFIX:** a bugfix

**Note:** All customers who had a valid Value Pack on effective date April 19<sup>th</sup> 2023 can update to version 23 free of charge.

Please note that if you upgrade from version 22 or earlier, you must contact our Customer Service Team via [cs@colorgate.com](mailto:cs@colorgate.com) to upgrade your license before you will be able to run the new version.

Please also note that as of version 22, Microsoft Windows 8.1 and Microsoft Windows Server 2012 are no longer supported.

## More information

Further information about version 23 can also be found on the website: [www.colorgate.com](http://www.colorgate.com)

If you wish to get information about improvements and bugfixes of previous versions, you can find the corresponding Release Notes in our Service & Support area (please note that you have to be registered and logged in as a user to access them):




<https://www.colorgate.com/support/en/download>

## Highlights of Version 23

- Our patented Fingerprint technology can now be combined with the Color Correction Loop Module. This powerful double enables new possibilities for standardization in your print workflow: color deviations in the reprinting of jobs can be measured and corrected iteratively. This makes it much easier to align the color of a reprint to a previously printed master. In addition, any measuring device supported by ColorGATE can now be used to measure the required targets, making this innovative workflow available to numerous customers.
- Fingerprint technology can now also be used in PDF-based workflows, as Fingerprint Production Files can now also be created from PDF files.
- From version 23, web tickets can be conveniently created and edited directly from the software - without having to open the Service & Support site. In addition, support info files can be automatically added to a web ticket. In this way, you can reach our support options even faster and more easily.
- The REST API Module has been fundamentally improved and enhanced with numerous functions: Among other things, the REST API now supports the creation and editing of containers, and all RIP settings are now accessible via REST. This wide range of functions, which are now available via REST, enables greater automation by tools outside of the ColorGATE software.
- In version 23, we have optimized the usability in several areas, making it even easier to work with the ColorGATE software, for example here:  
The "Module Info" dialog now displays all the modules available in your license - including those contained by default - so that you always have a complete overview of the components of your license.  
With the Job Backup Module, multiple job backups can now be selected at the same time and can also be deleted if necessary. This simplifies the handling of job backups.  
For software licenses, you can now switch between online and offline usage mode directly in the program - without having to go to the Service & Support site.
- The Adobe PDF Print Engine is now available in version 6.1 and includes, among other things, a new option for using the bicubic algorithm when rescaling image objects in PDF files.

## 2 New Drivers

### 2.1 Printer Drivers

Manufacturer	Device name			
Atexco	Model X Plus	Cat 2		
Canon/Océ	Océ/Canon Arizona 6160XHTF Mark II Océ/Canon Arizona 6160XTS Mark II Océ/Canon Arizona 6170XTHF Mark II Océ/Canon Arizona 6170XTS Mark II Océ Colorado 1630	Cat 3 Cat 3 Cat 3 Cat 3 Cat 2		
Durst	Durst P5 210 Durst P5 210HS Durst P5 350 Durst P5 350HS	Cat 3 Cat 3 Cat 3 Cat 3		
EFI	EFI FabriVU 340i EFI Vutek Q3r EFI Vutek Q5r	Cat 3 Cat 3 Cat 3		
Epson	Epson SureColor SC-F30X0 Series Epson SureColor SC-F63X0 Series Epson SureColor SC-F64X0 Series Epson SureColor SC-F64X0H FpFy Series Epson SureColor SC-F64X0H LcLm Series Epson SureColor SC-F64X0H OrVi Series Epson SureColor SC-P65X0 Series Epson SureColor SC-P85X0 Series Epson SureColor SC-T57X0 Series Epson SureColor SC-T77X0 Series Epson SureColor SC-T37X0 Series Epson SureColor SC-V7000	Cat 1 Cat 1 Cat 1 Cat 1 Cat 1 Cat 1 Cat 1 Cat 1 Cat 1 Cat 1 Cat 1 Cat 2		
Jetrix	Jetrix LXiR190 Jetrix LXiR320	Cat 2 Cat 2		

Mimaki	Mimaki CJV330 Mimaki JV330 Mimaki UJF3042 MKII e Mimaki UJF6042 MKII e Mimaki UJF7151 plus II	Cat 1 Cat 1 Cat 1 Cat 1 Cat 1		
Mutoh	Mutoh XpertJet-1341SR Pro Mutoh ValueJet-1638UR Mutoh ValueJet-1638UR Mark II Mutoh XpertJet-1641SR Pro Mutoh XpertJet-1682SR Pro Mutoh XpertJet-461UF Mutoh XpertJet-661UF	Cat 1 Cat 1 Cat 1 Cat 1 Cat 1 Cat 1 Cat 1		
Roland	Roland RT-640M Roland SG2-300 Roland SG2-540 Roland SG2-640 Roland SG3-300 Roland SG3-540 Roland VG3-540 Roland VG3-640	Cat 1 Cat 1 Cat 1 Cat 1 Cat 1 Cat 1 Cat 1 Cat 1		
Universal Digital	Universal Digital UD32R3BEW	Cat 1		
ZhongChuang IOT	ZhongChuang IOT	Cat 2		

## 2.2 Cutting Device Drivers

Manufacturer	Device name	Category
IECHO	IECHO-SK	Cat 1
Jingwei	Jingwei-SK	Cat 1

## 2.3 Measurement Device Drivers

Manufacturer	Device name	Category
X-Rite	X-Rite eXact 2 Series	Cat 2

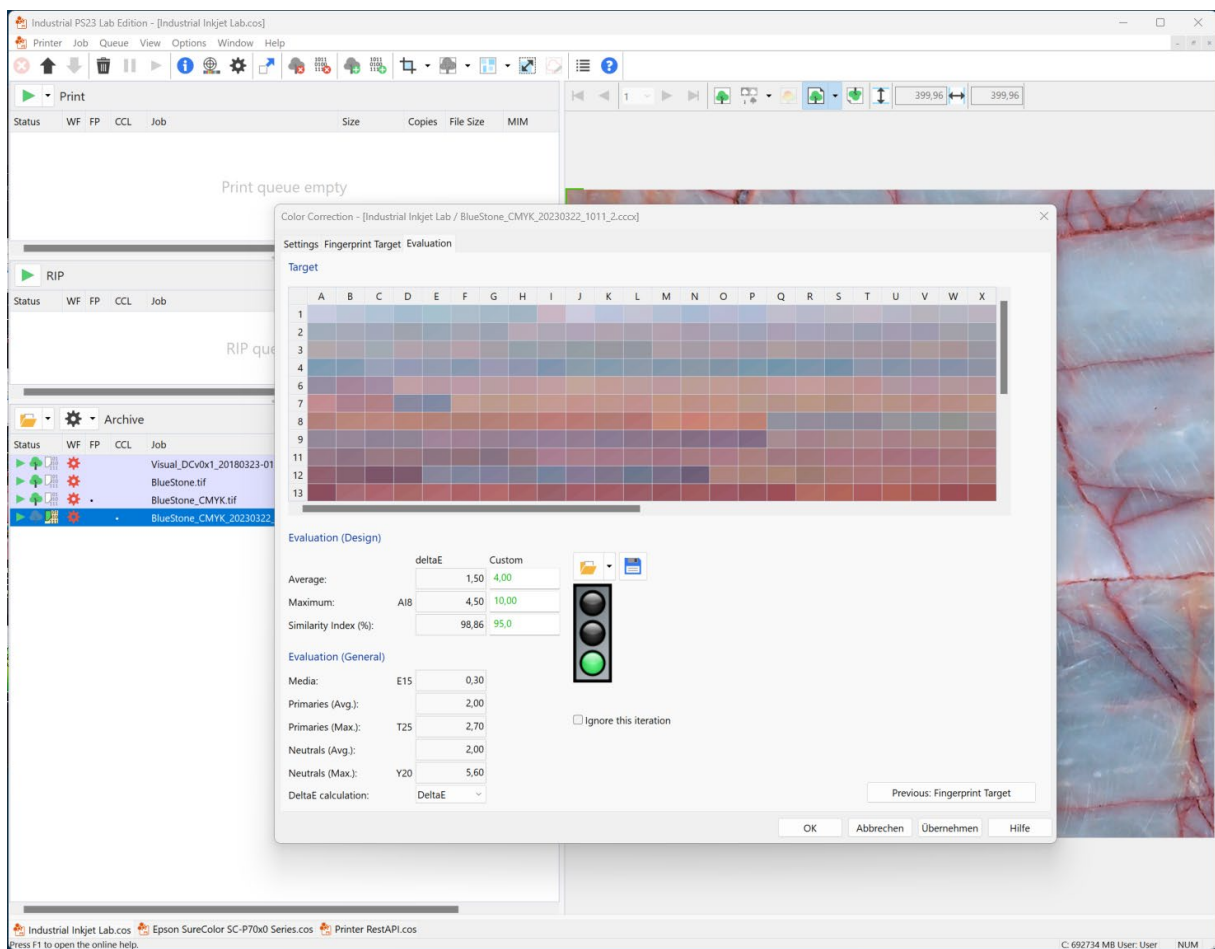
Complete driver list on our [website](#). Please note that drivers for Industrial Printing are not listed here.

### 3 Improvements and Bugfixes

#### 3.1 **NEW** Combination of Fingerprint and Color Correction Loop Module

From Version 23, Color Correction Loops can also be applied to Fingerprint Production Files. This combination of our patented Fingerprint technology with the Color Correction Loop Module makes it possible to evaluate objectively - based on measurement data - color deviations in reprints and to correct them iteratively in an automated process, which means effective and time-saving standardization.

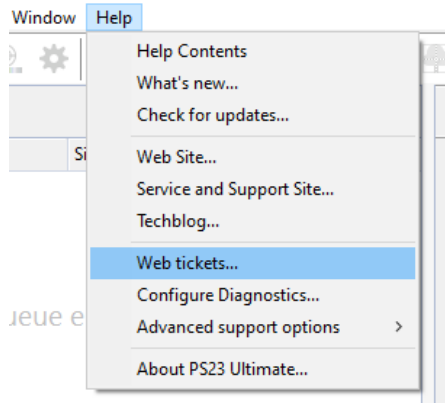
In addition, any measurement device supported by ColorGATE can now be used to measure the required targets, making this innovative workflow available to numerous customers.



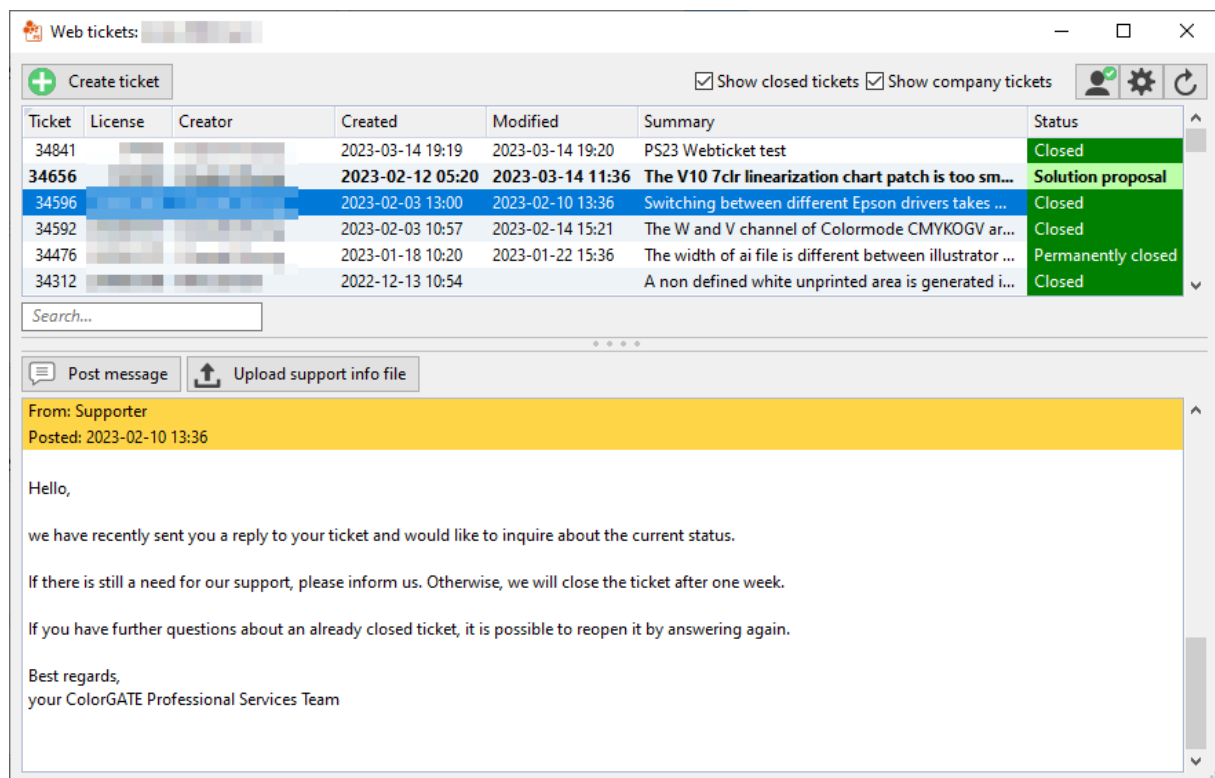


### 3.2 **NEW FEATURE** Creation of Web Tickets in the Software

There is a new feature that allows the web ticket system to be opened directly from the software, increasing usability and making it easier to access support options.

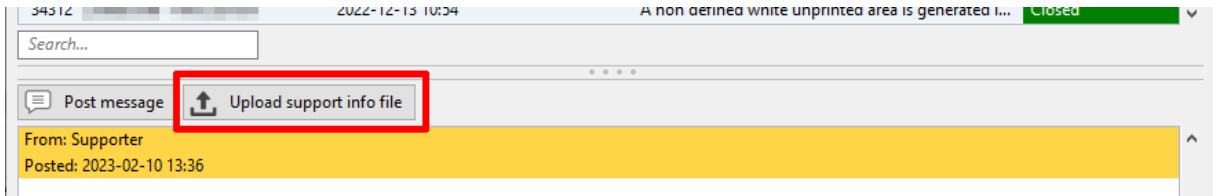


This allows web tickets to be created and edited without having to open the Service & Support Site to do so.



All the information needed to create a web ticket (such as license number, printer drivers used, build number) can be taken directly from the software, eliminating the need to switch back and forth between the software and the support site.

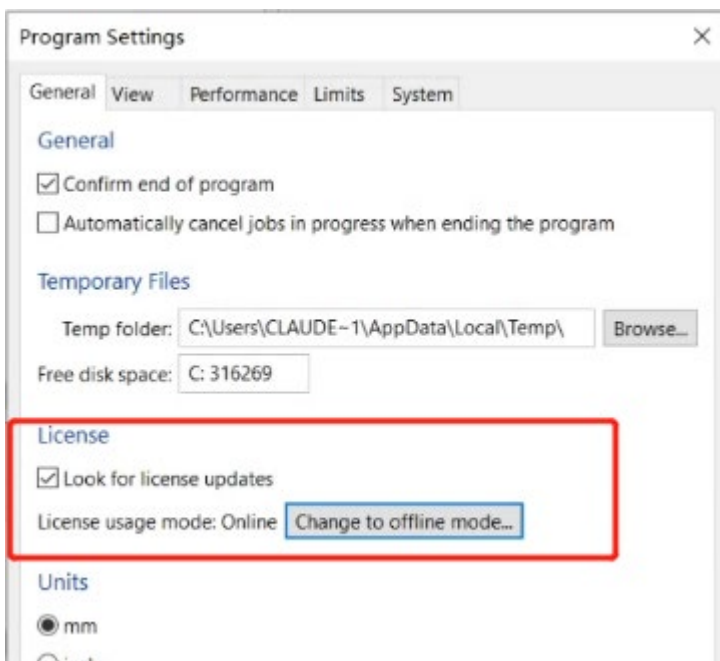
In addition, support info files can now be conveniently created from a web ticket and are then automatically assigned to it.



### 3.3 **NEW FEATURE** Switching between Online and Offline Mode in the Software

For software licenses, it is now possible to see directly in the program whether the license is used in online or offline mode and to change the usage mode if required, without having to go to the Service & Support Site.

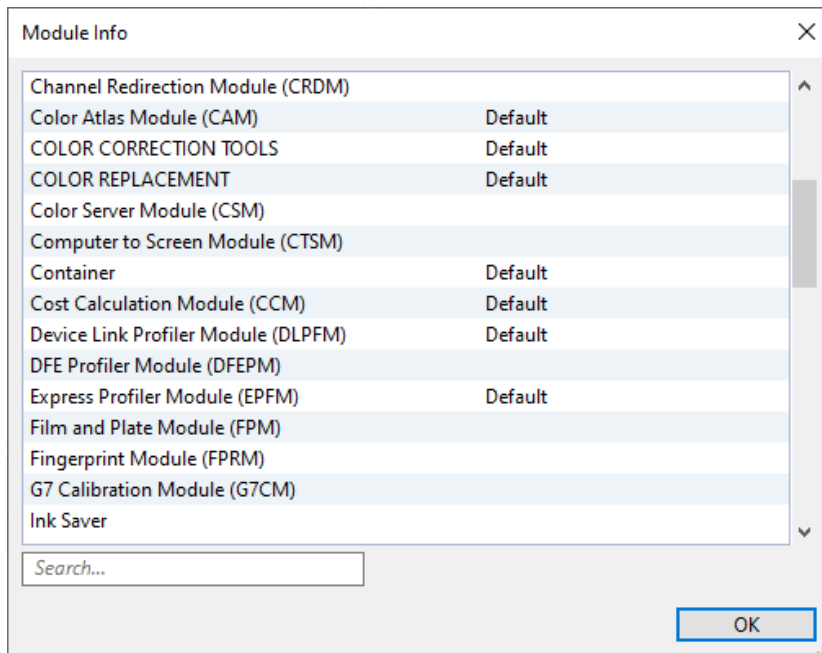
The corresponding option is located under "Options" > "Program Settings..." > Tab "General".



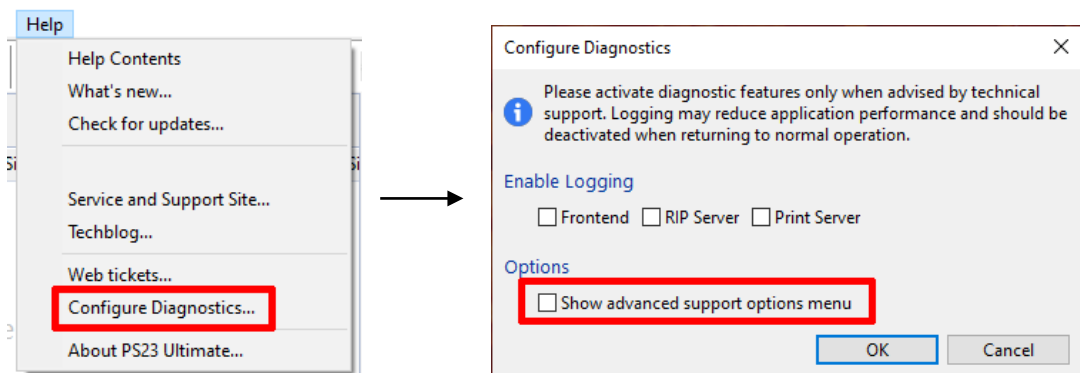
Please note that you have to retrieve the current usage mode once by clicking "Check...". After that you are able to change the mode.

### 3.4 General Improvements and Bugfixes

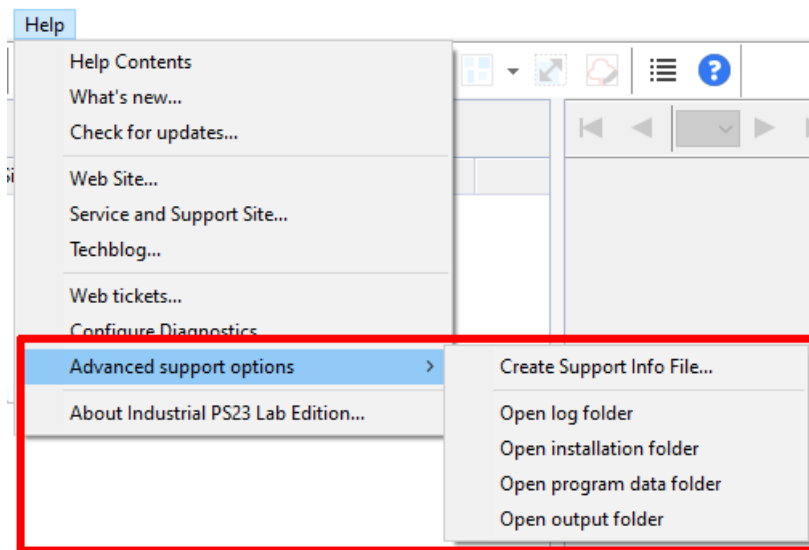
- NEW The "Module Info" dialog (under "Help" > "About xxx..." > "i") now shows all modules that are available with the current license (including the default modules contained in the base product).



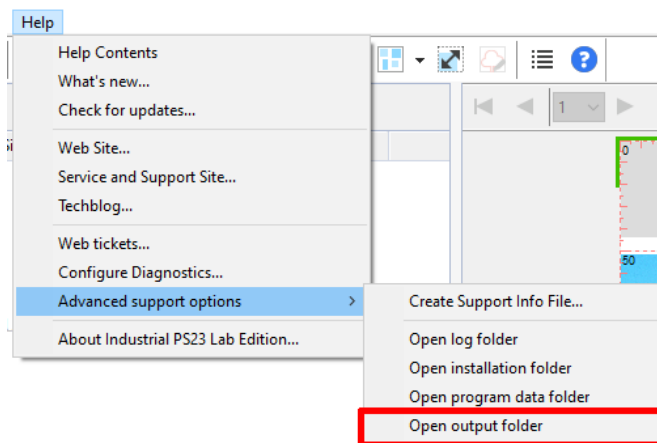
- NEW For better clarity, the menu items for advanced support options ("Create Support Info File", "Open log folder", "Open installation folder", "Open program data folder" and "Open output folder") can be shown or hidden by enabling or disabling the "Show advanced support options menu" option under "Help" > "Configure Diagnostics".



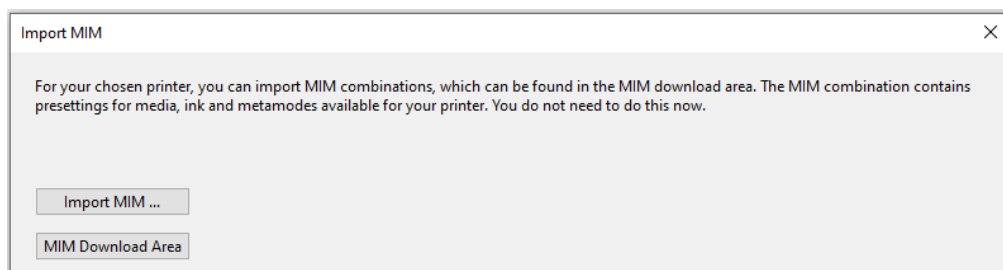
When enabled, the corresponding menu items are displayed in the "Help" menu:



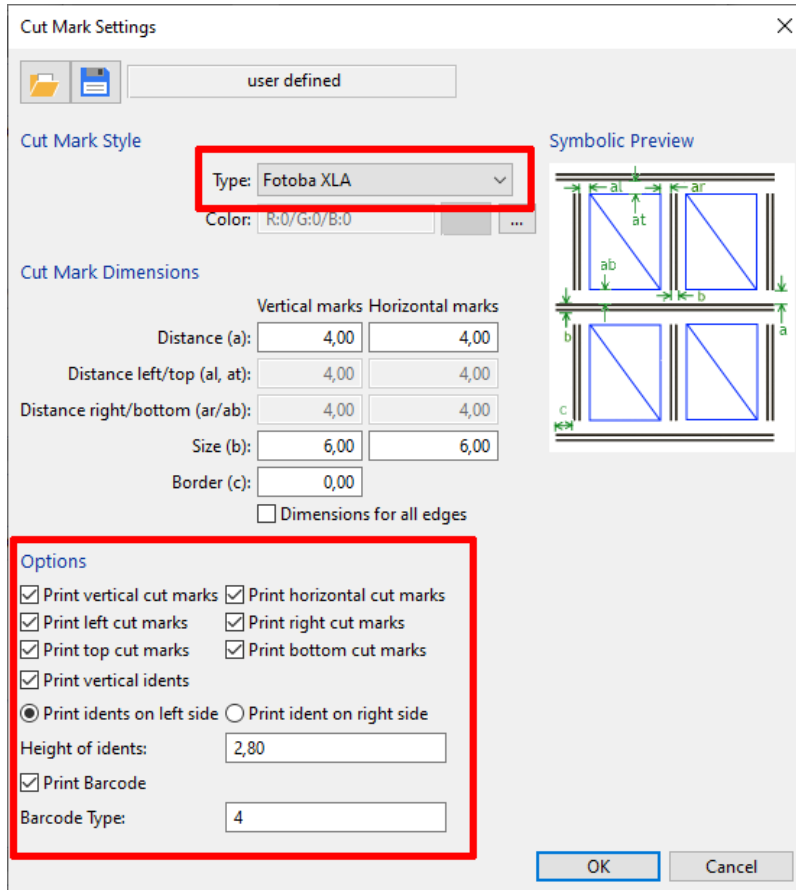
- **NEW** For file-based printers, now also the output folder can be opened via the menu "Help > Advanced support options".



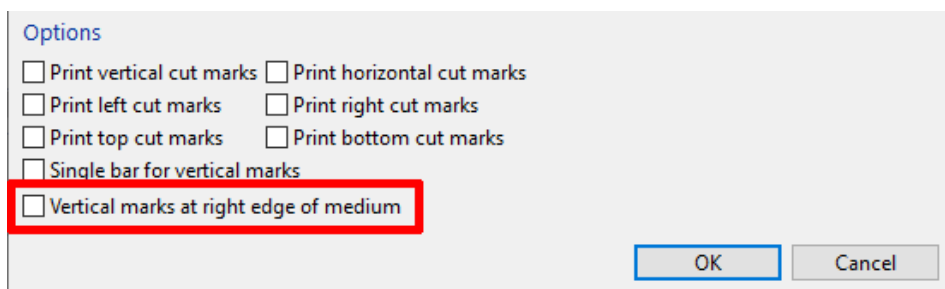
- **NEW** The text on the "Import MIM" dialog has been updated and a link directly to the MIM download area of the Service and Support Site has also been added.



- **NEW** A new cut mark style "Fotoba XLA" is now available, which allows printing of indentations ("idents") as well as supporting Fotoba barcodes.



- **NEW** For Fotoba cut marks, there is a new option available for a continuous marker on the right side of the medium ("Vertical marks at right edge of the medium").



- **BUGFIX** Ripping a profile target failed, if the MIM had an XCLR input profile selected even though "Handle spot colors as process colors" was not activated.
- **BUGFIX** Since version 22, multi-page files were sometimes erroneously output as single pages.

- **BUGFIX** When "inch" was selected as length unit, sometimes cut mark settings (on the "Job" tab) could not be saved with "OK".
- **BUGFIX** In version 22.10, the links to the ColorGATE Service & Support site (under "Help" > "Support") directed to the old Service & Support site instead of the current one.
- **BUGFIX** When a job exceeded the available length, horizontal alignment was applied to the job, but the horizontal alignment button (on the "Job" tab of the job settings) was greyed out.
- **BUGFIX** The option "Disable Auto-Tiling" on the "Job" tab of the job settings was not handled correctly for roll media under certain conditions.
- **BUGFIX** When "Center" was selected for "Offset x" and "Offset y" on the "Job" tab of the job settings, the centering values were calculated based on the printable area and not on the media size. This resulted in the job not being placed correctly on the media if the non-printable margins of a job differed from top to bottom.
- **BUGFIX** For multiple outputs, preview and print data were not correct when auto rotation and cutting were enabled.

#### Color Management:

- **NEW FUNCTION** The "Spot Color Tone Value" (SCTV) algorithm for calculating spot color gradients according to ISO 120654 is supported now.
- **NEW** The CrossXColor library has been updated to V1.20.4, increasing general compatibility and performance.
- **CHANGE** In version 22.10, in context of integrating the Adobe PDF Print Engine V6, the color management for PDF files with overprints/transparencies was improved for output in multicolor modes (e.g., CMYKOG).  
Since this resulted in jobs not being ripped properly under certain circumstances, in version 23 this enhancement has been temporarily disabled.
- **BUGFIX** When ripping jobs for color mode MONO, the linearization was applied invertedly, which resulted in incorrect output.
- **BUGFIX** When using color mode MONO, the output of raster data was incorrect, if the bit depth was set to 2 or 4 bit and less than the maximum amount of droplet levels was used (e.g., 4 bit and 7 droplet levels).
- **BUGFIX** If two special colors were selected and different intensities were specified for both, the intensity of the first special color was also applied to the second.

### Color Replacement:

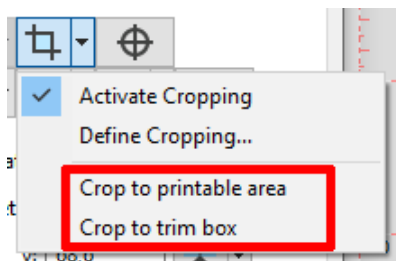
- **NEW** New Pantone color tables V5 Solid Coated/Uncoated have been added, ensuring smooth color communication.
- **BUGFIX** Spot color replacements are now disabled if the entry was disabled in the color table (previously, these were still replaced if the auto replacement was activated).
- **BUGFIX** If a hotfolder has more than one color table configured the first enabled entry will now be used.
- **BUGFIX** Under certain conditions the color picker replacement was not applied to the print data.

### Control Wedge Evaluation:

- **NEW** The new control wedge IDEAlliance\_12647-7\_2013-LAD\_dithered is available for the following measurement devices: X-Rite i1Pro3, X-Rite i1Pro3 Plus, X-Rite i1iO for i1Pro3 & i1Pro3 Plus, Barbieri.
- **NEW** For X-Rite i1Pro3 Plus, there are new color control wedges for RGB and 6CLR.
- **BUGFIX** Control wedge evaluation failed for jobs using an output profile that contained a comma character in its file name.

### Cropping:

- **NEW** The "Cropping" function was improved to allow for more automation and better visibility of the cropped area in preview:
  - There are two new modes to crop jobs automatically to the printable area or to the trim box of a PDF.



- Hotfolders can be configured to apply the new cropping modes.
- The preview shows the cropped area darkened instead with a checkered pattern.

### File Handling:

- **BUGFIX** The transparency for specific PDF files was inverted.

**Licensing:**

- **NEW** SHL-HW licenses (Single Host License with hardware dongle) are now also available for the Chinese market. Accordingly, all printer drivers offered by ColorGATE can also be operated with a hardware-based license and the user interface can be displayed in Chinese.
- **BUGFIX** The stability for software-based licenses has been increased through various bug fixes.

**Preview:**

- **NEW** The job placement panel in the media preview includes options to save settings made there as a shortcut. These shortcuts are now saved so that they are still available after restarting the program.

**Send To:**

- **BUGFIX** If a job was sent to another printer via the "Send To" function and the hotfolder of the destination printer used "Dynamic" as page size, the media size of the job was 0x0.

**Special Colors:**

- **BUGFIX** When using special color White in RGB color mode, "Pixel" and "Pixel invert" were exchanged in the output.
- **BUGFIX** If multiple layers were printed, the info text appeared only on one layer.

**User Interface:**

- **NEW** The visibility of the platen outlines has been improved by displaying the outlines by inverting the background.
- **BUGFIX** In the Italian user interface, there were wrong translations for the "Fit to page" option.
- **BUGFIX** In the "About..." dialog, the "i" icon for opening the "Module Info" dialog was missing in some software versions.



### 3.5 Adobe® PDF Print Engine



Information about this function on the [website](#).

- NEW The Adobe PDF Print Engine has been updated to version 6.1. This includes a new option to use algorithm bicubic when rescaling image objects found in PDF files. On the "RIP" tab, a combo box was added to control this option by allowing the user to select from "Nearest Neighbor" (higher performance, lower quality) and "Bicubic" (lower performance, higher quality). For new hotfolders, "Bicubic" is used as the default, while existing hotfolders/jobs are using "Nearest Neighbor", to avoid changes on existing data.

#### PDF/PS Features

Disable overprint

Print annotations

Interpolation for images: Bicubic v

Different page sizes: Nearest Neighbor

Bicubic

Advanced...

### 3.6 Color Correction Loop Module



Information about this module on the [website](#).

- BUGFIX The creation of data for IPAC inspection systems failed when the "Use device links" option was activated on the "Profiles" tab in the advanced job settings.
- BUGFIX When the mouse was hovered over a patch on a target, the patch coordinates displayed in the message box were incorrect.
- BUGFIX The creation of the correction profile failed for jobs that used a color mode with transfer channels, e.g., CMYKk.

### 3.7 Container



Information about this function on the [website](#).

- **NEW** The REST API now supports creating and editing containers (e.g., adding new jobs to a container, removing jobs, changing the settings and the positions of jobs).
- **CHANGE** It is not possible anymore to change the color mode of a container as this could lead to inconsistencies and crashes.
- **BUGFIX** When loading hotfolder settings into a container, all printer and color settings are now also applied to all jobs included in the container.
- **BUGFIX** If the jobs in a container were to be sorted by name using the "Ordered Nesting" function, the order was not correct.
- **BUGFIX** Processing of containers with multiple single-color cut marks has been stabilized.

### 3.8 Cost Calculation Module



Information about this module on the [website](#).

- **NEW** Cost calculation is now available for the Océ Colorado 1650.
- **BUGFIX** If a decimal delimiter other than "." was set, decimal numbers were discarded under certain circumstances.
- **BUGFIX** Since version 22.00, it was not possible to save a cost report.

### 3.9 Fingerprint Module



Information about this module on the [website](#).

- **NEW** It is possible now to create Fingerprint Production Files (.fpf) from PDF files, so that the Fingerprint technology can also be used in PDF based workflows.

- **BUGFIX** If a Fingerprint file was in CMYK and a color mode with light colors was used for the output, an error in the target dialog appeared.

### 3.10 G7 Calibration Module

Information about this module on the [website](#).



- **BUGFIX** In the G7 calibration target "Idealliance P2P51", the reference values for patches in column F were incorrect. This may have caused false results in the G7 calibration.

### 3.11 JDF Interface Module

Information about this module on the [website](#).



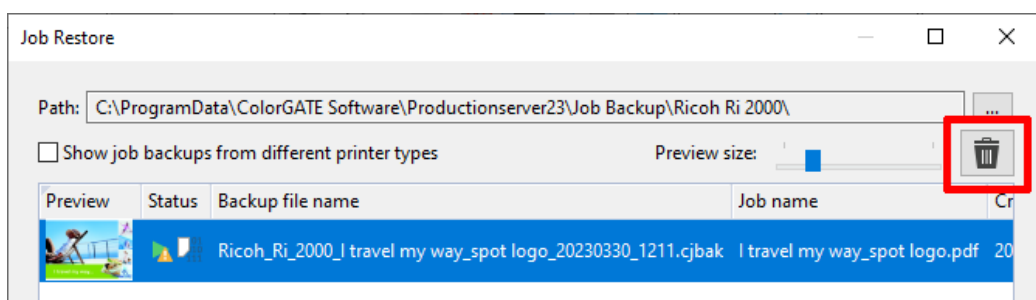
- **BUGFIX** When cropping was to be applied via REST API or JDF, it was disabled if "Dynamic" was selected under "Media Size" at the same time.

### 3.12 Job Backup Module

Information about this module on the [website](#).



- **NEW** A new button in the "Job Restore" dialog allows to remove selected job backups.



- **NEW** The selection of multiple job backups in the "Job Restore" dialog has been simplified. Instead of clicking single jobs, standard list commands (SHIFT, CTRL and CTRL+ A) can be used to select multiple jobs.

- **BUGFIX** If raster data was to be copied when restoring a job backup, missing administrator rights were reported in some cases, although they were not necessary.
- **BUGFIX** If an error occurred when importing a job backup via a hotfolder, the corresponding job was not moved to the folder for job backups with conflicts but remained in the hotfolder. This has been fixed.  
In addition, when restoring a job backup via a hotfolder, a system log message now informs whether the operation was successful.

### 3.13 Media and Light Profiler Module



Information about this module on the [website](#).

- **BUGFIX** When creating a new MIM in the Media and Light Profiler, the linearization was not stored in the settings.
- **BUGFIX** Copying of the profiles is not possible anymore when opening the MIM administration from the assistant.
- **BUGFIX** When using the Media and Light Profiler the "Profile Creation" button was grayed out since version 22.00 and it was not possible to start the profile creation.

### 3.14 Media Device Synchronization



Information about this module on the [website](#).

- **NEW** The user is now asked before deleting a synchronization to avoid unintended loss of data.
- **BUGFIX** In version 22.10, the Media Device Synchronization failed if a G7 linearization was used when profiling the MIM.

### 3.15 Out of Gamut Module



Information about this module on the [website](#).

- **BUGFIX** The "Out of Gamut" preview was not correct if the option "Force spot color management for unreplaced spot colors (applies to colors using Lab)" was enabled.

### 3.16 Print and Cut Module



Information about this module on the [website](#).

- **BUGFIX** When a job with a cut path created from spot colors was copied using the "Duplicate" > "Create Link" option, the cut path was not included in the copied job.
- **BUGFIX** The cut path preview was distorted if the image was rotated and the option "Proportional" was switched off.
- **BUGFIX** In version 22.10, the creation of cut files took much longer than in version 21.
- **BUGFIX** In the "Device Configuration" dialog for cutting devices, the first entry of any combo box could not be selected until another entry from the list had been selected first.

#### Graphtec (CE, FC):

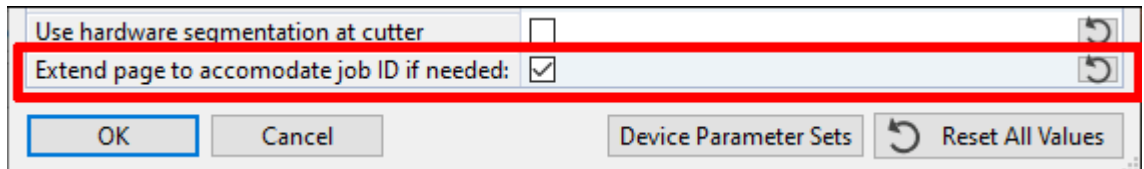
- **BUGFIX** Under certain circumstances, the cutting process was aborted and the cutter went back to the zero point.

#### HARMUTH:

- **NEW** When using "Edge Marks" for synchronization marks positioning, the QR code is now placed beneath the upper left synchronization mark.
- **NEW** The file name of the cutting file now only contains the job ID (and no longer the job name).
- **BUGFIX** Cut files created by the driver could not be processed.
- **BUGFIX** The QR barcode is now no longer printed if it was deselected in the device configuration.

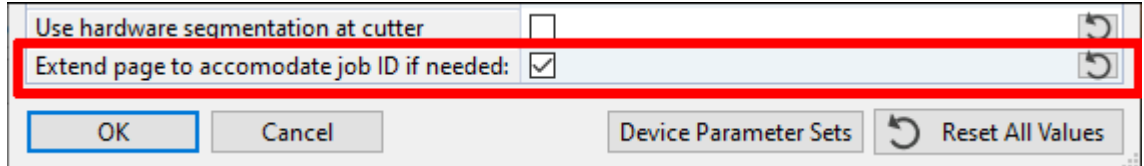
**HP Latex Cutter Series:**

- **BUGFIX** The job ID was sometimes printed in the barcode itself.  
Now, there is a new option for Summa barcodes ("Extend page to accommodate job ID if needed"): If the job width is too small to print the job ID next to the barcode, it can be selected whether to extend the width or to omit the job ID.



**HP Latex Plus:**

- **BUGFIX** In version 22, the barcode was not created properly.
- **BUGFIX** The job ID was sometimes printed in the barcode itself.  
Now, there is a new option for Summa barcodes ("Extend page to accommodate job ID if needed"): If the job width is too small to print the job ID next to the barcode, it can be selected whether to extend the width or to omit the job ID.

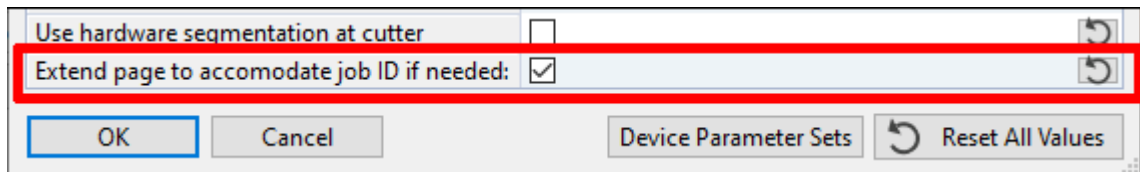


**Summa F Series / L Series:**

- **BUGFIX** Output as .sgp file could not be imported properly into GoProduce.
- **BUGFIX** Registration marks were either missing or displayed incorrectly.

**Summa (S/S2 Class, SummaSign, SummaCut):**

- **BUGFIX** When using OPOS-CAM, the device was not able to read the barcode.
- **BUGFIX** The cut path was shifted by a few millimeters when the option "Print white around synchronismarks" was enabled.
- **BUGFIX** The job ID was sometimes printed in the barcode itself.  
Now, there is a new option for Summa barcodes ("Extend page to accommodate job ID if needed"): If the job width is too small to print the job ID next to the barcode, it can be selected whether to extend the width or to omit the job ID.



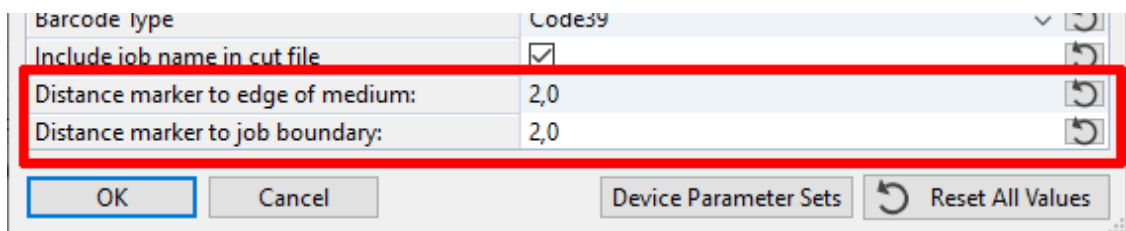
- **BUGFIX** In version 22.10, Productionserver sometimes crashed while automatically creating cut data for a container.

**Valiani:**

- **BUGFIX** The position of the crop marks was not the same as defined in the device settings.

**Zünd Cut Center:**

- **NEW** In the "Device Configuration" dialog there are now options to define the distance between the registration marks and the job boundary or the edge of the medium.



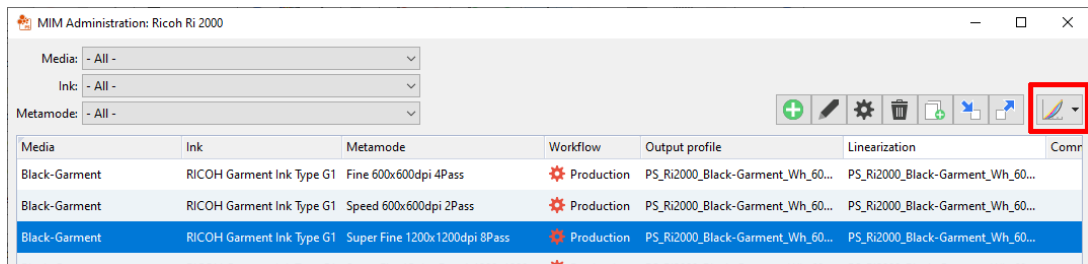
### 3.17 Profiler Module / Linearization Assistant



Information about the Profiler Module [here](#) on the website.

Information about the Linearization Assistant [here](#).

- **NEW** There are some improvements to make the administration of MIM's and linearizations/profiles more convenient:
  - It is now possible to open an existing linearization/profile directly from the MIM administration. The profile / linearization is opened in the assistant that was used for creation (e.g., Linearization or DFE Assistant).



- A MIM can now be opened from the Linearization and Profiling Assistant via the MIM selection, so there is no need anymore to open the .ccx (or another profile) file in the MIM administration first.

- **NEW** The user interface in the Linearization and Profiling Assistant was cluttered on some dialogs and has been improved.
- **NEW** Linearization and ink limit targets for color mode MONO have been added.
- **NEW** So far, droplet separation curves could be edited only for the White channel if the special color mode "Brightness" was used. Now, droplet separation curves are available for all special colors, no matter which mode is used.
- **BUGFIX** In some cases the measurement values of the profiling target were missing when reopening the Linearization and Profiling Assistant.
- **BUGFIX** If a MIM contains color correction settings, a message is now displayed in the Linearization Assistant. This informs the user that these settings will not be applied to the targets because they are job specific.
- **BUGFIX** When profiling a MIM for a color mode with transfer channels (e.g., CMYKLcLm), the option "Make profile available for Windows color management" did not actually copy the profile.
- **BUGFIX** On the "Profile Creation" tab of the Linearization and Profiling Assistant, the text under "MIM Combination" was truncated.
- **BUGFIX** When the value for density was calculated from Lab values and the values did not allow the density to be calculated, the value "inf" was displayed. This has been changed so that in this case the value "-1" is now displayed for the density.
- **BUGFIX** When printing a target for the color mode MONO, the print file of the target contained no patches.

#### Barbieri Spectro LFP / Spectro LFP qb / Spectro Swing:

- **BUGFIX** When using the Target Generator for Quick Linearization Targets, manual registration marks were missing.



#### ColorGATE Rapid Spectro Cube:

- **NEW** It is now possible to apply a distance between the individual patches of the target in the "Target Layout" dialog.

#### X-Rite i1iO / X-Rite i1iO for i1Pro3:

- **BUGFIX** If the last row of a target contained less than six patches the measurement failed.

#### X-Rite i1Pro3:

- **CHANGE** In version 23, the category of the measurement device was changed and is now Cat0. If an earlier version is used with a V23 license, the driver is also available, even if it was not part of the old license. If older licenses (V20-V22) are used, the driver is still Cat1 and must be activated in the license.

### 3.18 REST API Module



Information about this module on the [website](#).

- **NEW** All RIP settings (including PDF options) are now accessible via REST.
- **NEW** The REST API now supports creating and editing containers (e.g., adding new jobs to a container, removing jobs, changing the settings and the positions of jobs).
- **NEW** A new endpoint for MIM's has been implemented. This enables import and export as well as deletion of MIM's and profile files via REST.
- **NEW** The separation curves of the profile settings dialog are now available via REST and are reported back in endpoint 7.10.
- **NEW** Depending on the printer driver, the resolution and the format of the output file can now also be provided as pixel specification via the REST API.
- **NEW** It is possible now to activate and receive duplex settings (e.g., used by HP Latex 570) via REST.
- **BUGFIX** When reopening an existing .ccx file, the wrong printer was used under certain circumstances. Now, there is the new endpoint 7.12 that allows opening a profile in a specific queue. This is useful if there is more than one queue for the same printer model.

- **BUGFIX** The option "downloadOutputFiles" only worked if the system log was active and configured to report info messages. This dependency was removed. The option now works independently of any system log setting.
- **BUGFIX** When cropping was to be applied via REST API or JDF, it was disabled if "Dynamic" was selected under "Media Size" at the same time.

### 3.19 Printer related

#### Brother GTX-600:

- **NEW** Files created with Productionserver can now be opened in Brother's FileViewer. In addition, jobs generated in Productionserver have the prefix "CG:" in their name and can thus be identified more easily in FileViewer.
- **BUGFIX** Platen sizes 24x24 and 18x22 have been added.

#### Canon iPF PRO printer drivers with Chroma Optimizer ink:

- **BUGFIX** It is now possible to completely disable the option for clear coat.

#### Canon iPF PRO-1000:

- **BUGFIX** If a predefined "Media Size" in the measurement unit "inch" was selected, printing failed under certain circumstances.

#### ColorGATE Industrial Inkjet Lab:

- **BUGFIX** Elements like the Job Info did not work correctly in the Lab color mode.

#### ColorGATE RasterFile:

- **BUGFIX** The 1-bit output did not work properly.

#### ColorGATE Windows Printer-PS:

- **BUGFIX** Since version 22, an error was occasionally issued that the RPC server was not available, and the job was not printed.

#### Epson SureColor SC-P10000:

- **BUGFIX** When setting the Halftoning Method to "Rip" and the print mode was "VSD5 2bit", medium sized ink droplets were not handled correctly.

#### Epson SureColor SC-P20000:

- **BUGFIX** When setting the Halftoning Method to "Rip", some 2bit print modes produced error messages on the printer and the print mode "VSD5 2bit" handled medium sized ink droplets not correctly.

#### FUJIFILM Acuity Prime 20:

- **BUGFIX** If the origin of the printer was on the right side, it was possible that multipage jobs were not displayed correctly in the preview.

- **BUGFIX** Files with the combination of spot colors White and Varnish could not be printed.

**FUJIFILM Acuity Prime 30 / Acuity Prime L:**

- **BUGFIX** If the origin of the printer was on the right side, it was possible that multipage jobs were not displayed correctly in the preview.

**FUJIFILM Acuity Ultra 3200 Series / 5000 Series:**

- **BUGFIX** The maximum media width has been increased to 3400mm (3200 Series) and 5130mm (5000 Series).

**HP Latex 700 / 700W / 800 / 800W:**

- **BUGFIX** The automatic MIM creation button on the Printer Status Monitor was not disabled after a MIM had already been successfully created.

**HP-PageWide-XL4000 / XL-4500:**

- **NEW** High-capacity stacker and Folder are available now as output options.

**Inca Digital Onset:**

- **BUGFIX** The ink consumption for cost calculation was not calculated directly after the RIP process.

**Inca Digital Onset R50i:**

- **BUGFIX** Updated IDD's for the X1HS, X2HS and X3HS models have been added to the installation.

**Inca Digital Onset X:**

- **BUGFIX** The color mode CMYKLcLm was missing.

**JinMiLong CoJet Plus:**

- **NEW** The resolution 1440x540 for CMYK and CMYKLcLm color modes has been added.

**Kornit Atlas MAX Poly:**

- **BUGFIX** Reference values for Neon Yellow and Neon Pink were missing in exported CGATS files, when they were output as process colors, so it was not possible to load exported measurements again.

**Mimaki JFX-200-2513 EX:**

- **BUGFIX** It was not possible to get a report of the used dot size and the ink amount.

**Mimaki JV300:**

- **NEW** The driver now provides options for automatic heater shutdown and for top blower strength.

**MS LaRio:**

- **BUGFIX** Due to an issue with cost calculation, an RPC error occurred.

**Océ Arizona 1360GT:**

- **NEW** The "Output Opacity" options (on the "RIP" tab of the job settings) are now available for this printer driver.

**Océ Colorado 1650:**

- **NEW** The driver now has a report-based cost calculation.
- **NEW** FLXfinish+ print modes are now supported.
- **NEW** Margins were revised.
- **NEW** The "Advanced media step calibration" setting is now available.

**Ricoh Pro L5130 / L5130e / L5160 / L5160e:**

- **BUGFIX** An incorrect amount for ink usage was displayed in the cost report when CWC layering was selected.

**Ricoh Ri 1000 / Ri 2000:**

- **BUGFIX** For plates with outlines, grid lines are now displayed again.
- **BUGFIX** The needed margins for both hat and sleeve platen were missing.
- **BUGFIX** On the "Print Mode" tab, some texts were not correctly displayed in French.

**Roland DG IU-1000F:**

- **CHANGE** The driver has been renamed from "Roland DG IU-1000F" to "Roland IU-1000F".

**Roland VG2-640:**

- **BUGFIX** MIM's from version 10 were using 600x600dpi instead of 900x600dpi.

**Roland VS-300:**

- **NEW** Print modes for ECO-SOL MAX2 and ECO-SOL MAX3 were added.

**Shenzhen CNTOP DTG / CNTOP Hybrid:**

- **NEW** The 1-bit mode is now supported.

**swissQprint Karibu:**

- **NEW** The special color preview images now have a transparent background, so that they can be displayed correctly in Lory.
- **BUGFIX** When loading an SQPE file, the values for height, width, and R2R specified in this file were not applied correctly.
- **BUGFIX** White and Varnish resolutions were not linked to the process colors.

A list of all printer drivers supported by ColorGATE can be found on our [website](#).